

Les ventricules cérébraux  
(vus en transparence)

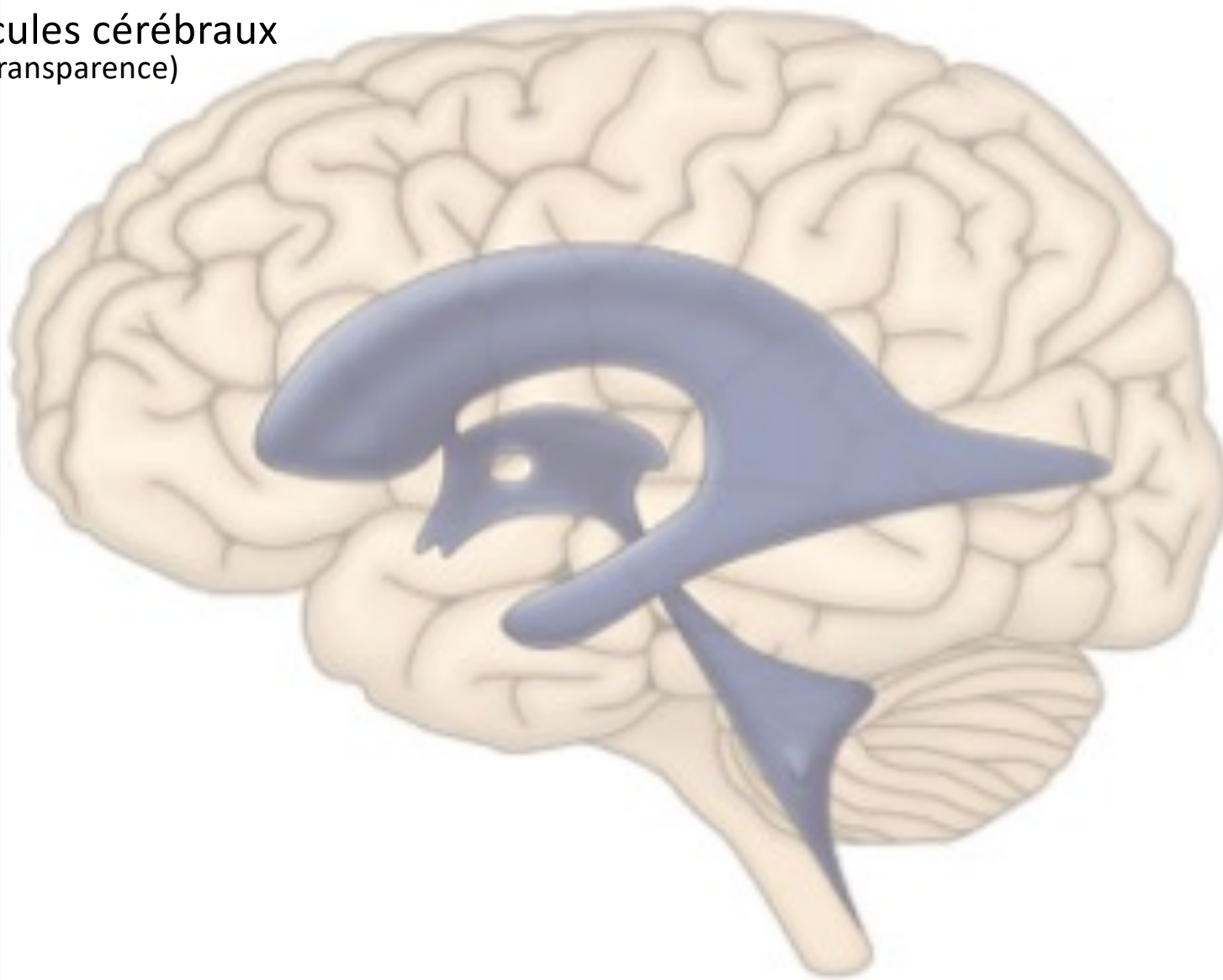
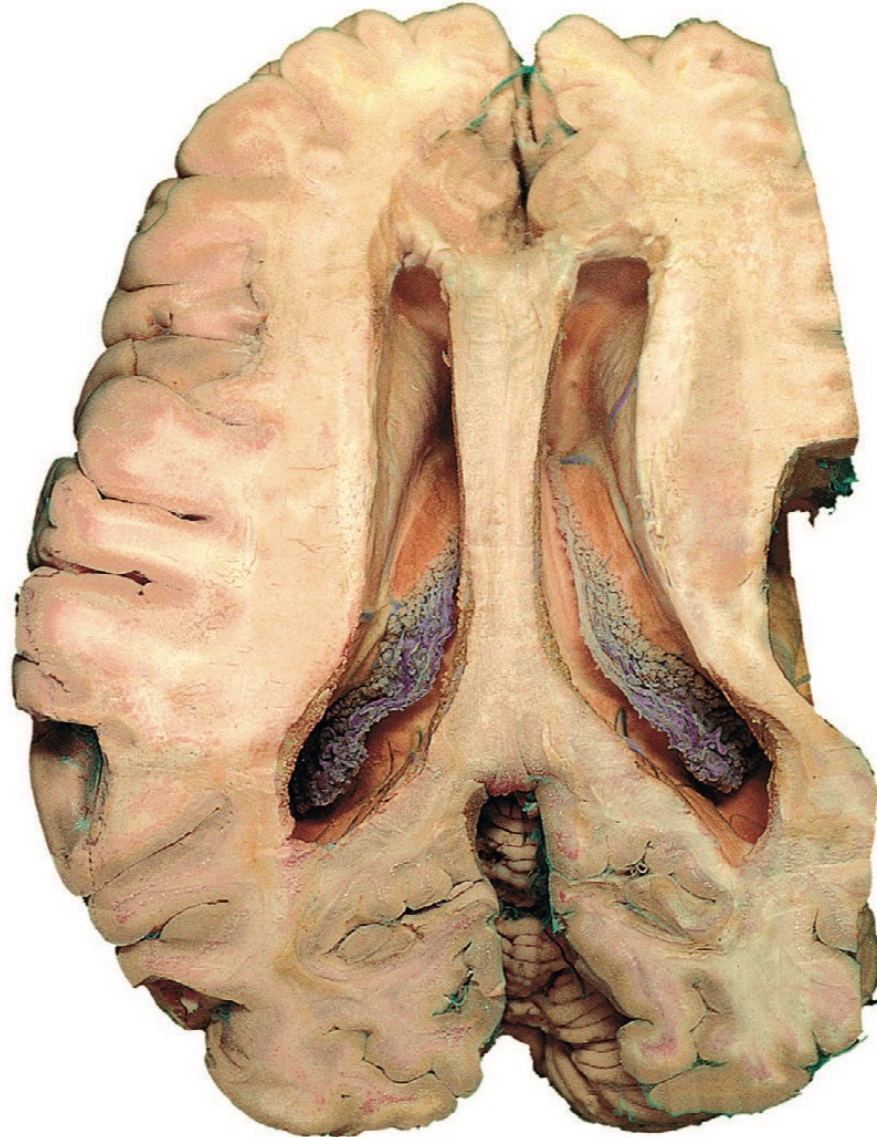


Figure 9.76

Dissection supérieure des  
hémisphères cérébraux.

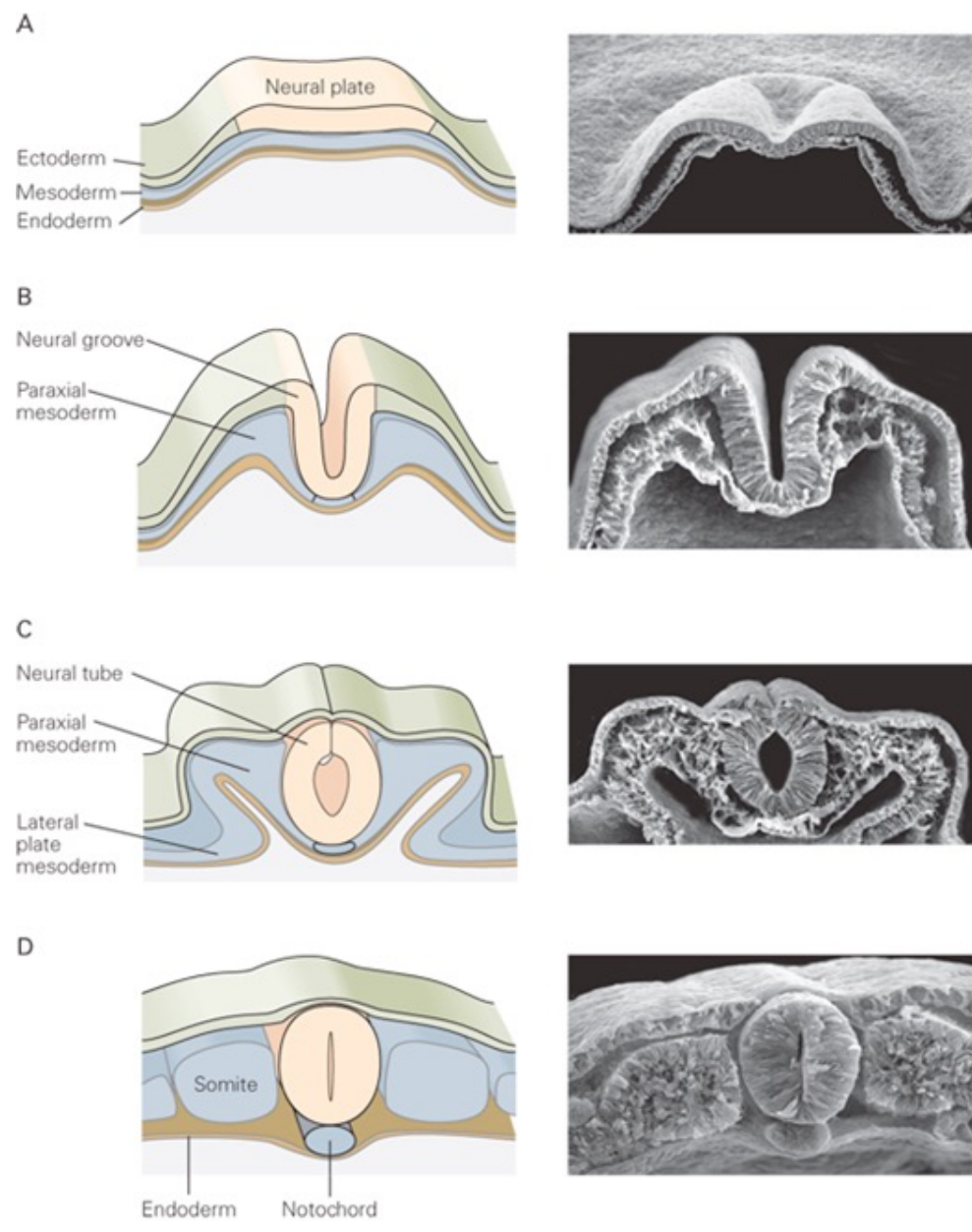


Vue supérieure

**Figure 9.16**

Neurulation

Formation du **tube** neural



Crête neurale

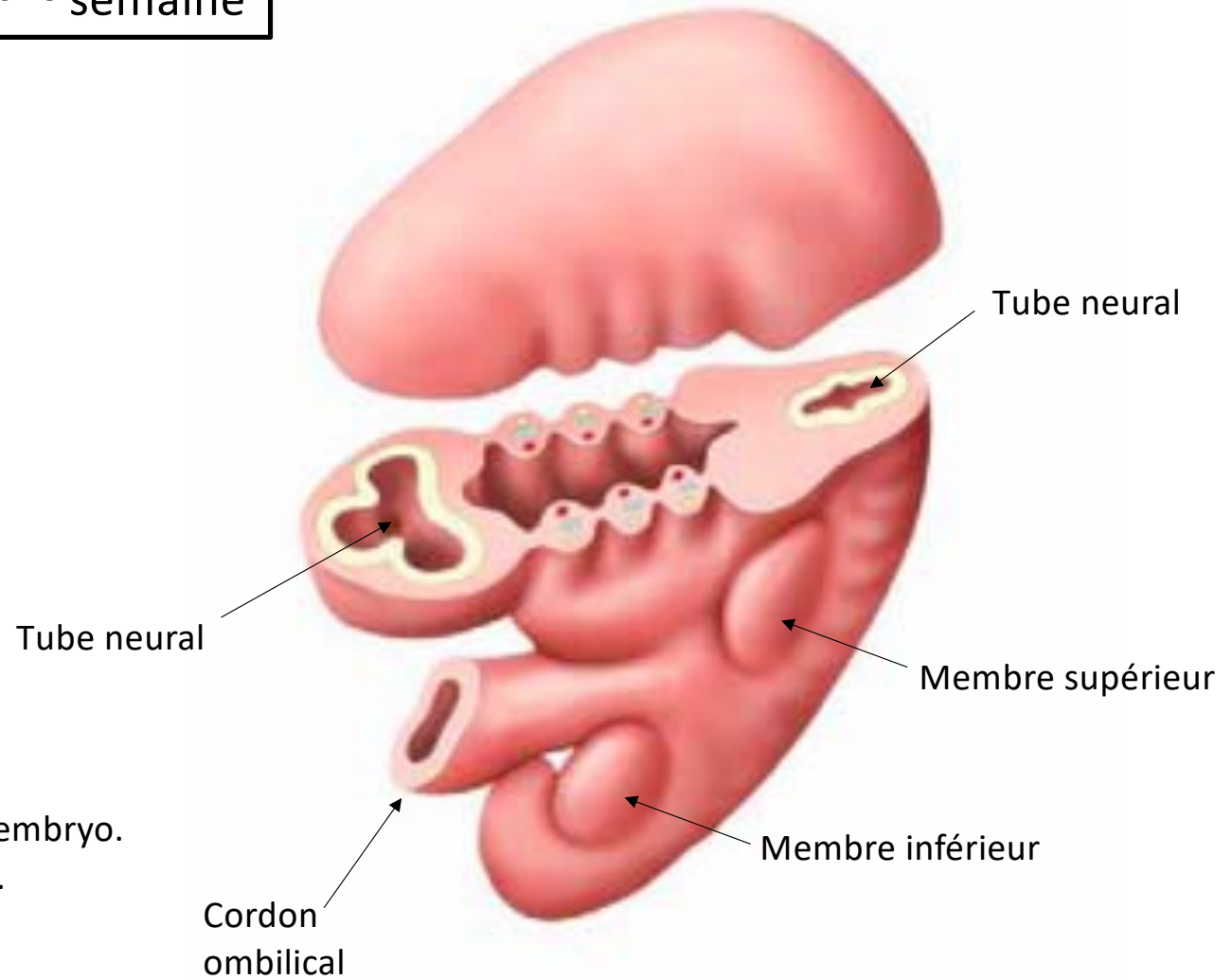
Embryon de poulet

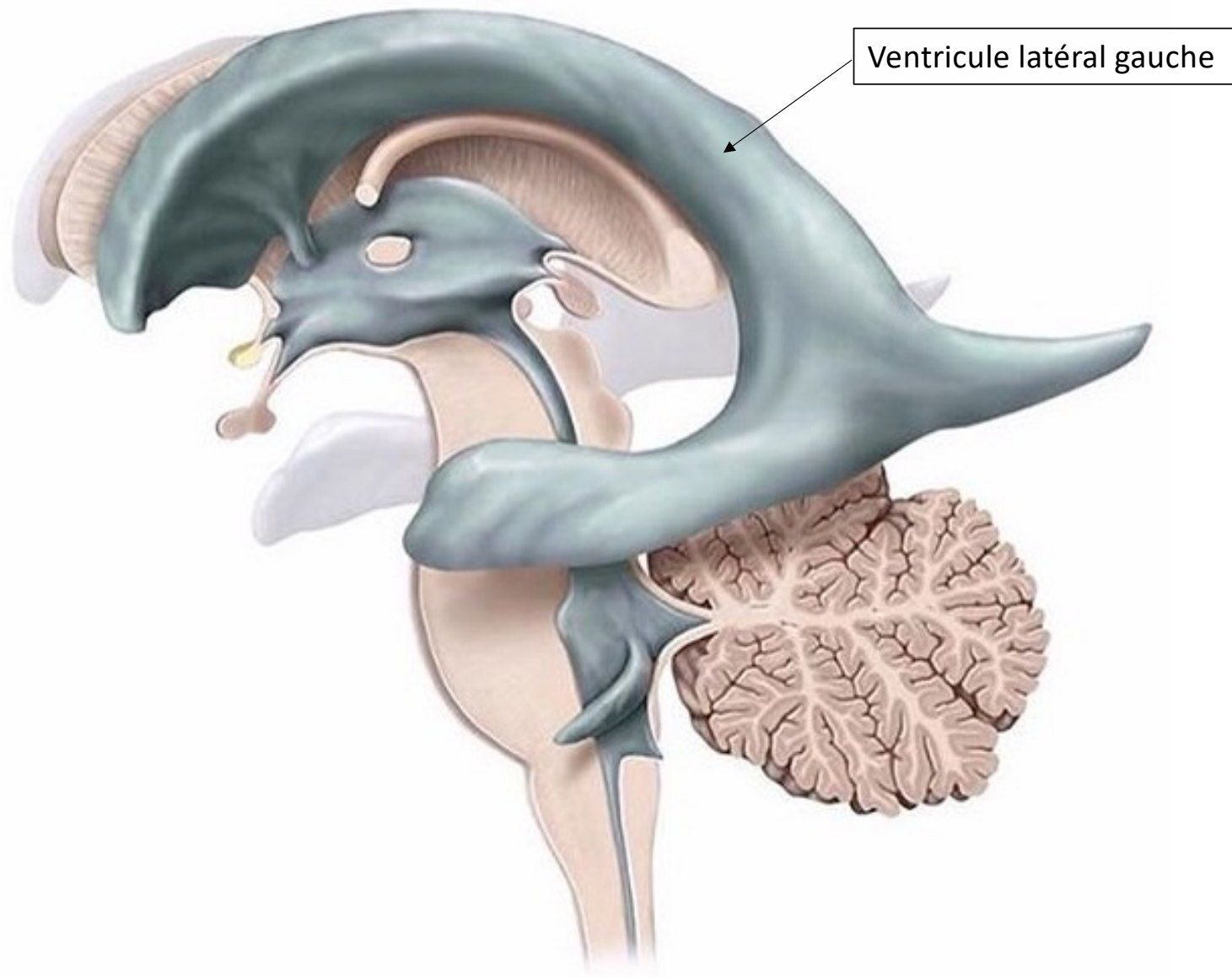


Embryon humain, fin de la 5<sup>ème</sup> semaine



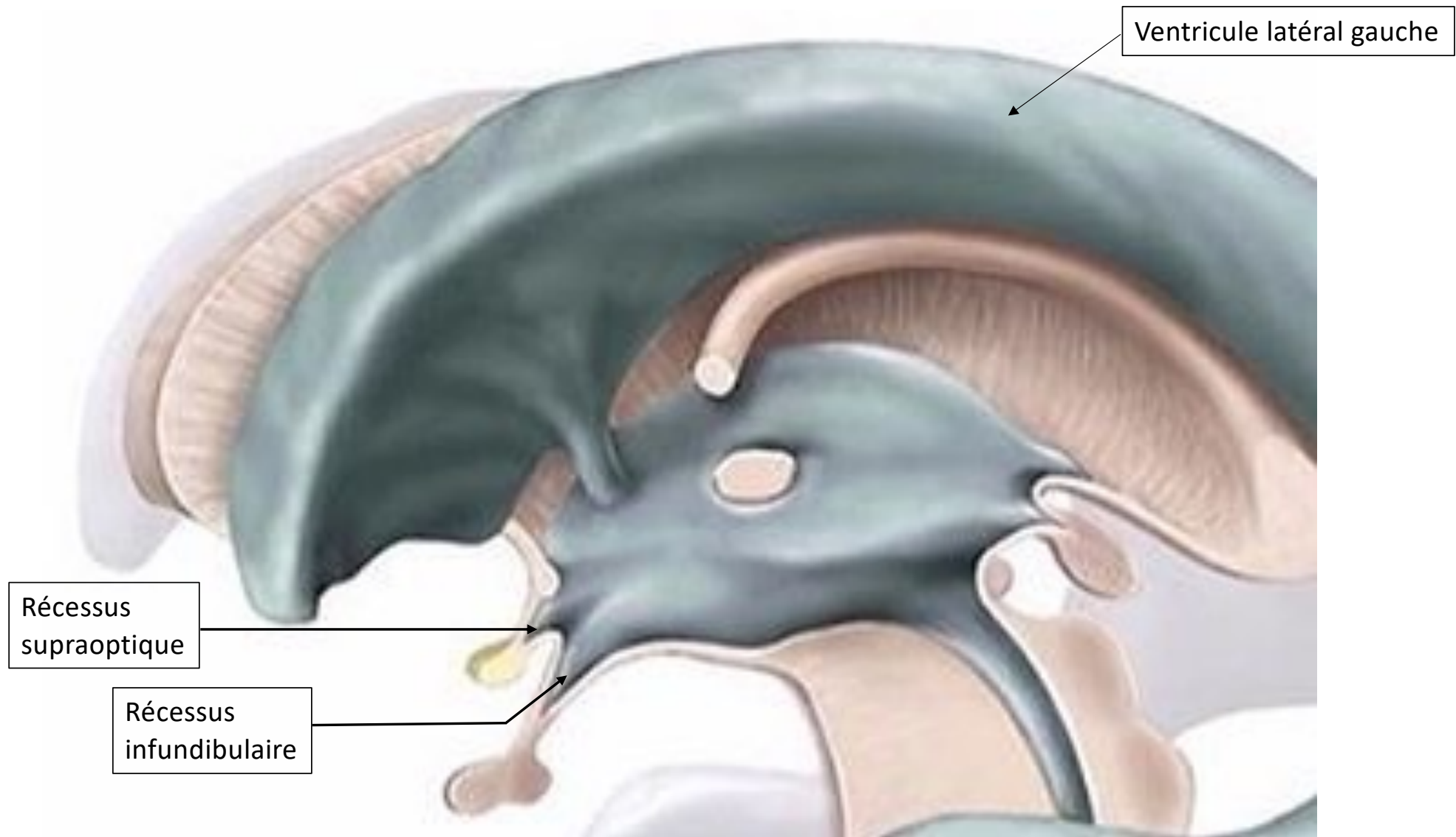
Head and neck region of a ~ 5 week-old human embryo. demonstrating the pharyngeal **arches** and **clefts**.



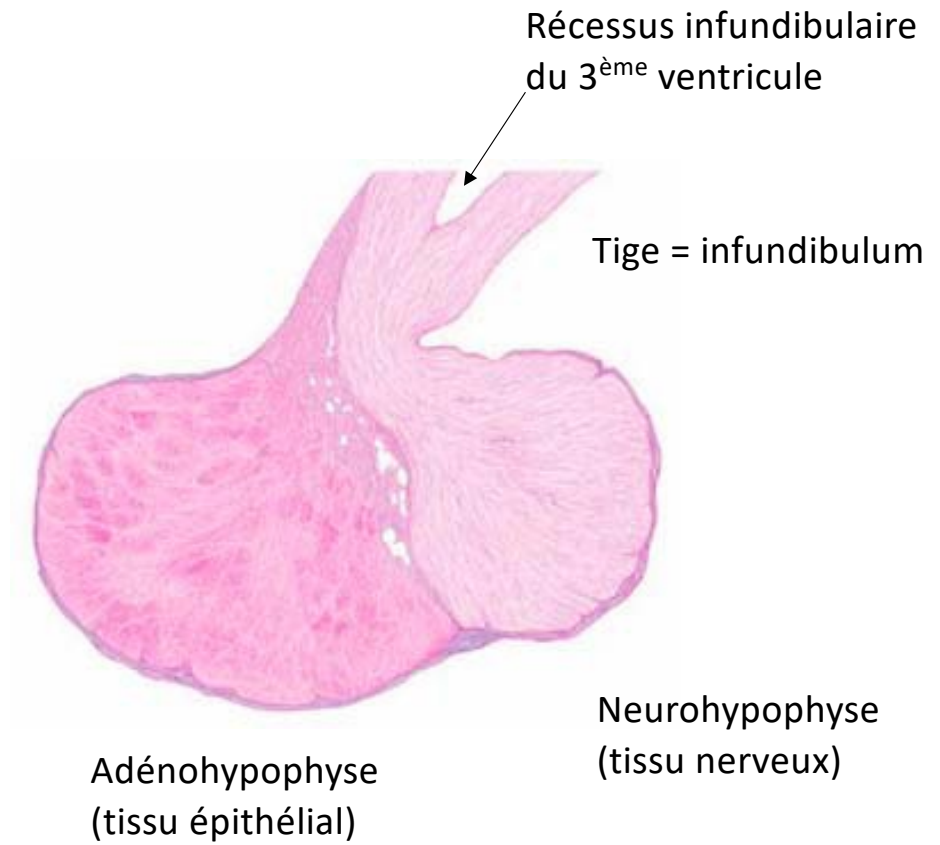
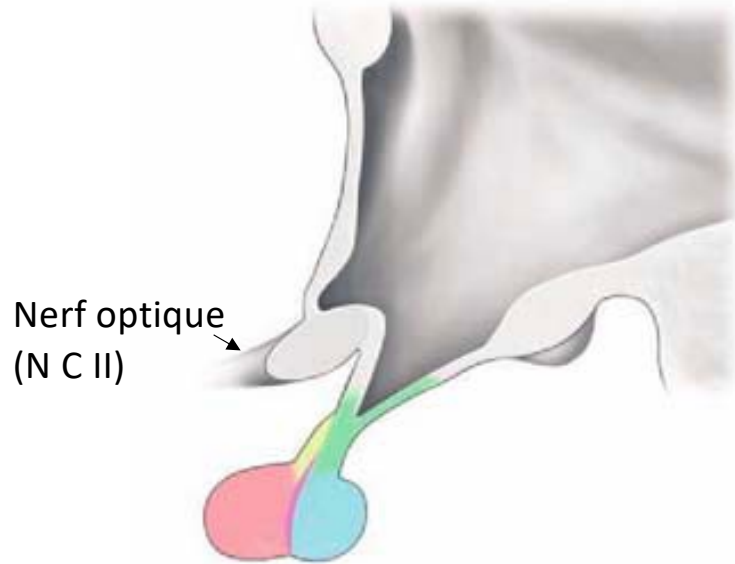


Ventricule latéral gauche

Vue latérale



# Hypophyse



# 3<sup>ème</sup> ventricule

2 récessus antérieurs :

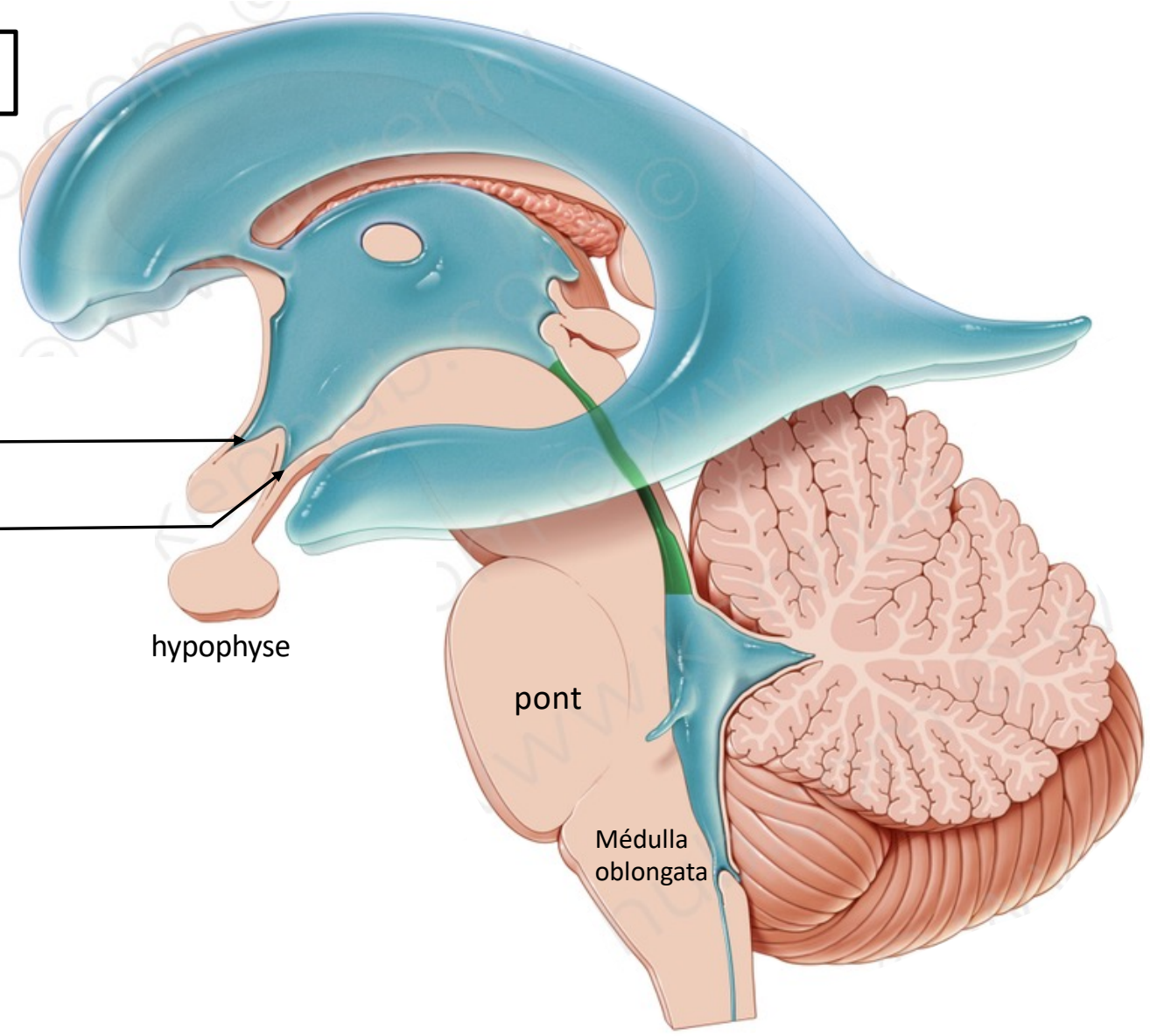
Récessus supraoptique

Récessus infundibulaire

hypophyse

pont

Médulla oblongata



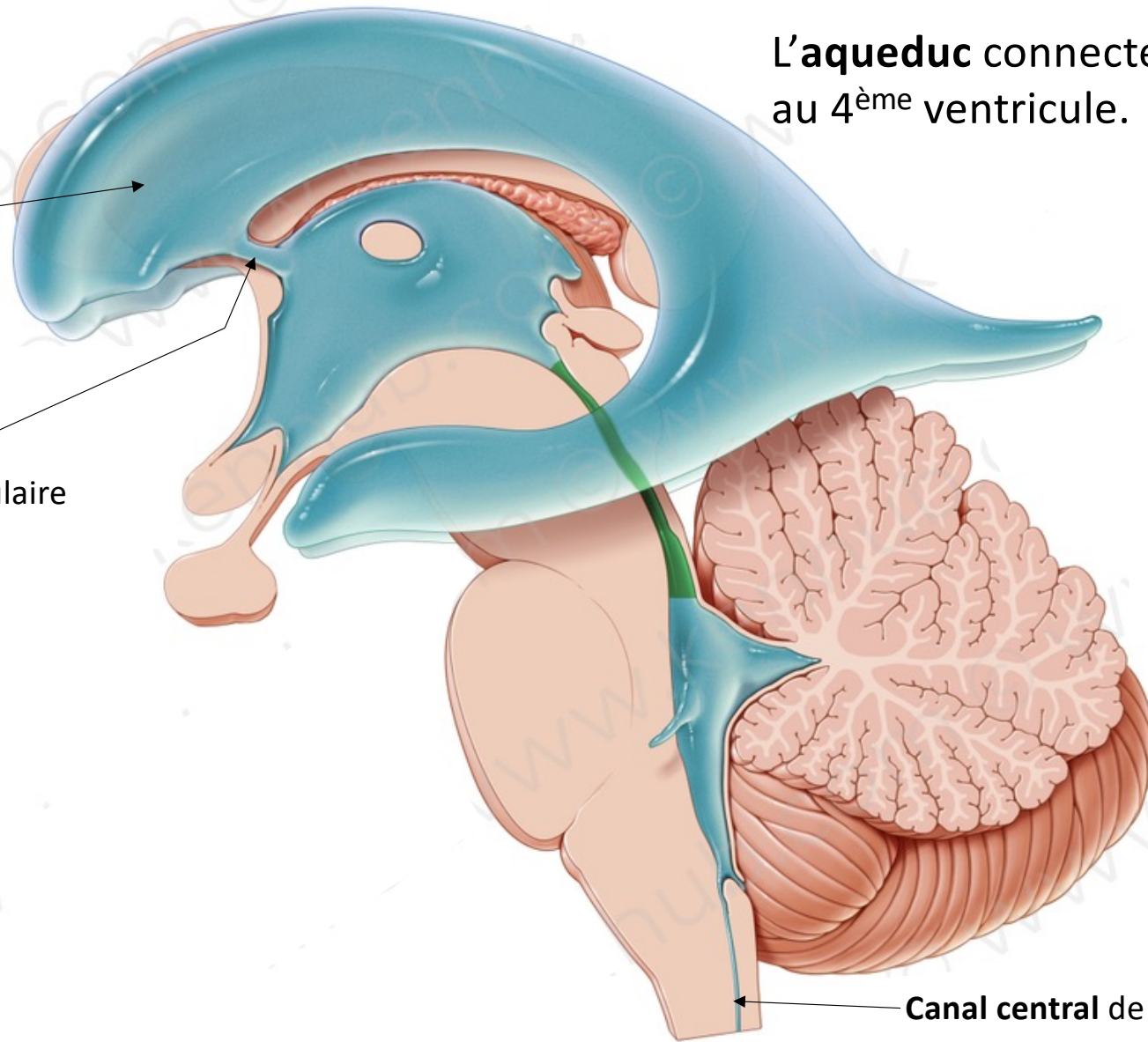
L'aqueduc connecte le 3<sup>ème</sup> ventricule au 4<sup>ème</sup> ventricule.

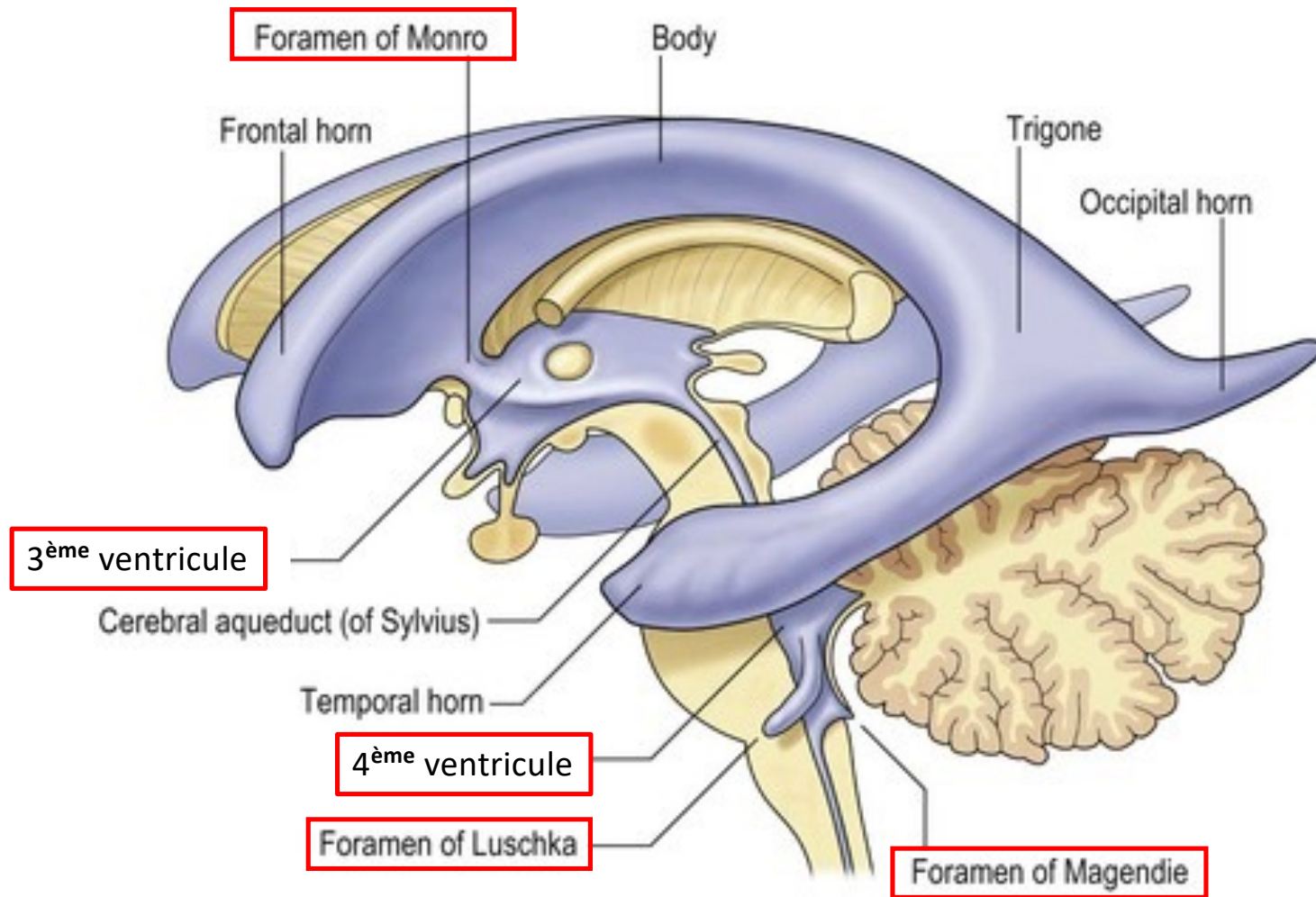
Ventricule latéral gauche

Foramen interventriculaire (de Monro)

← cervelet

← Canal central de la moelle spinale

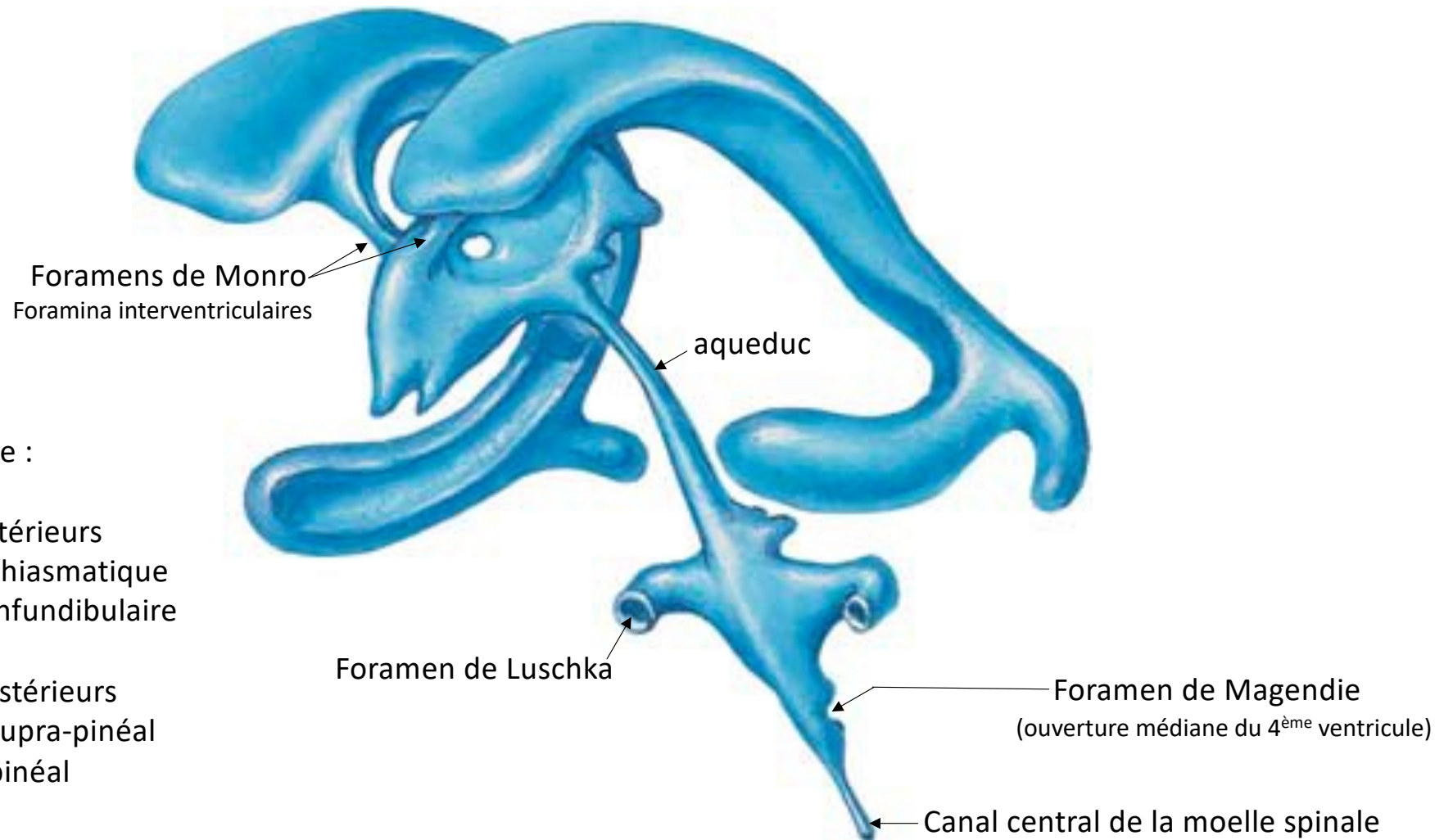


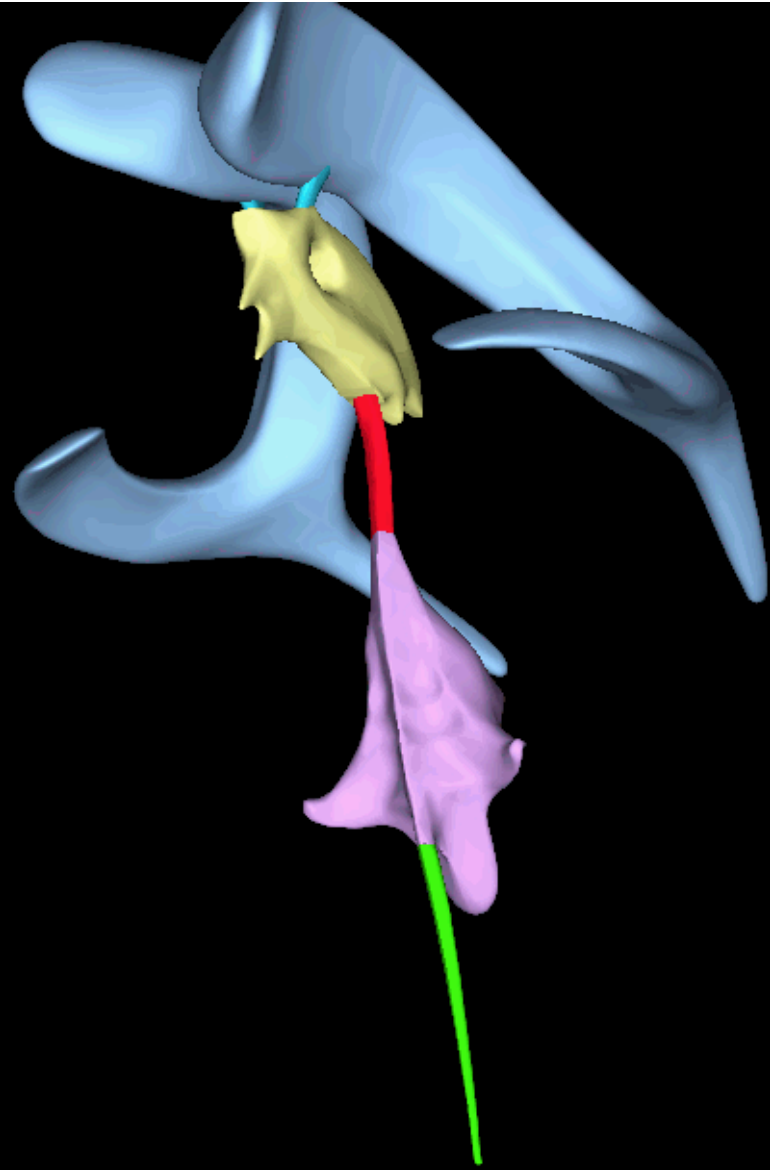


4ème ventricule :  
3 ouvertures

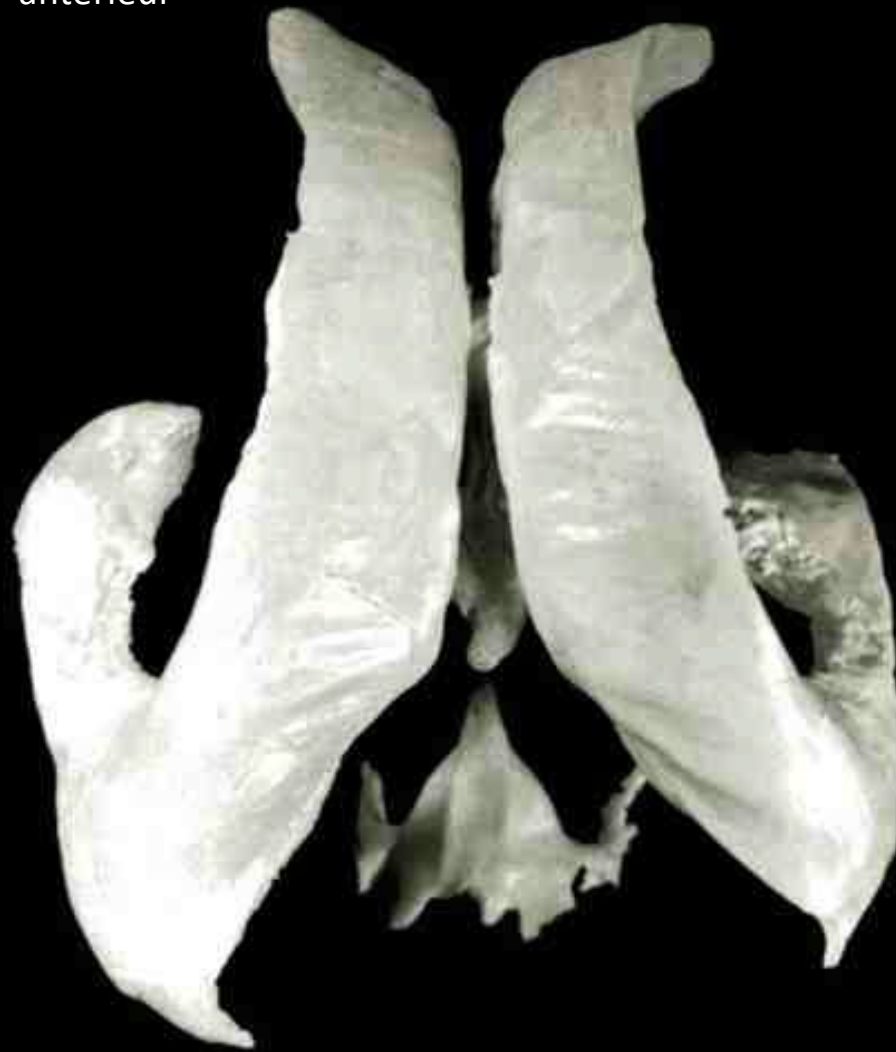
Schematic illustration of the components of the ventricular system.  
Note the two anterior recesses (chiasmatic and infundibular)  
and the two posterior recesses (pineal and suprapineal) of the third ventricle.

## Moulage



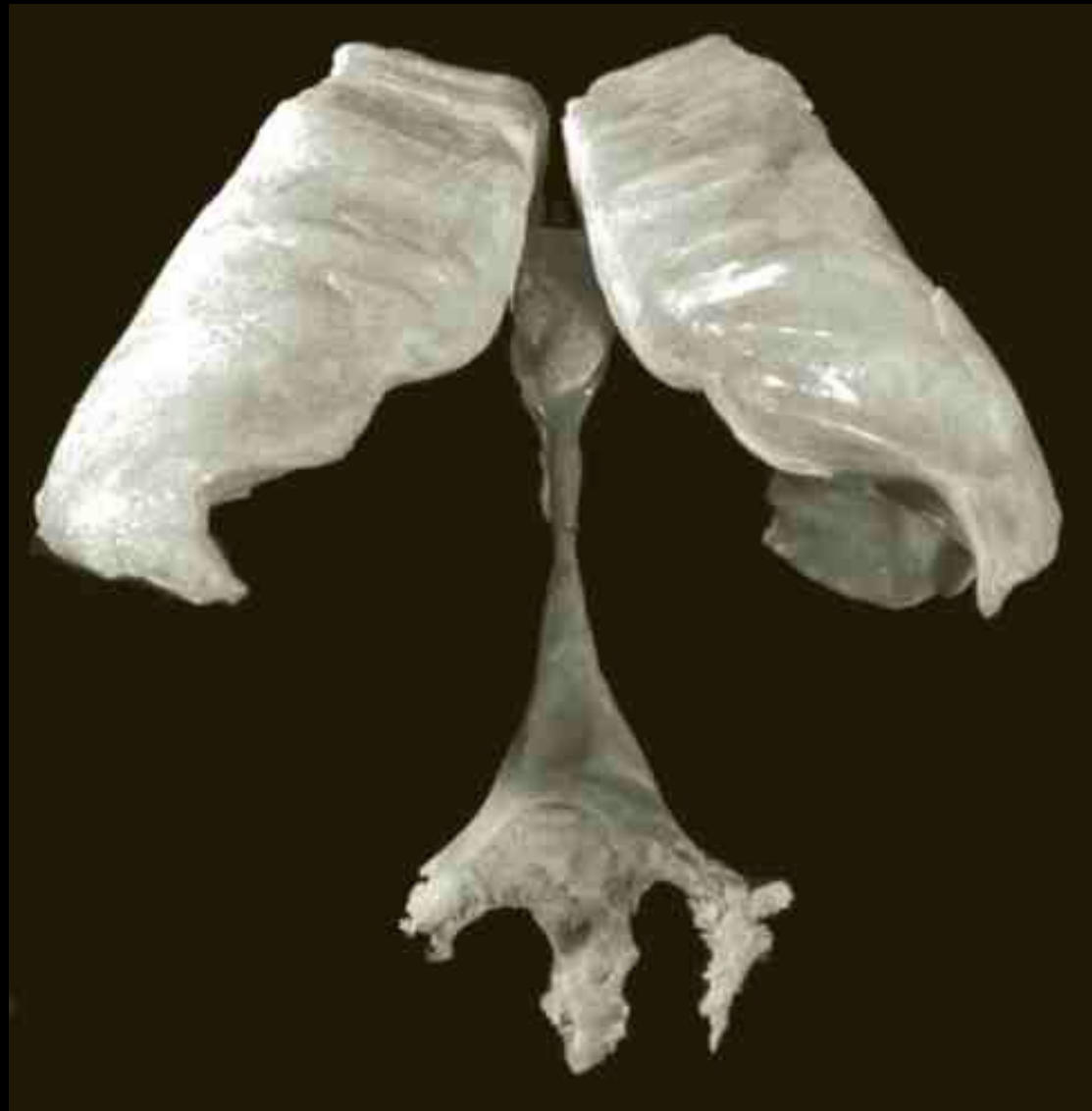


antérieur



Vue supérieure

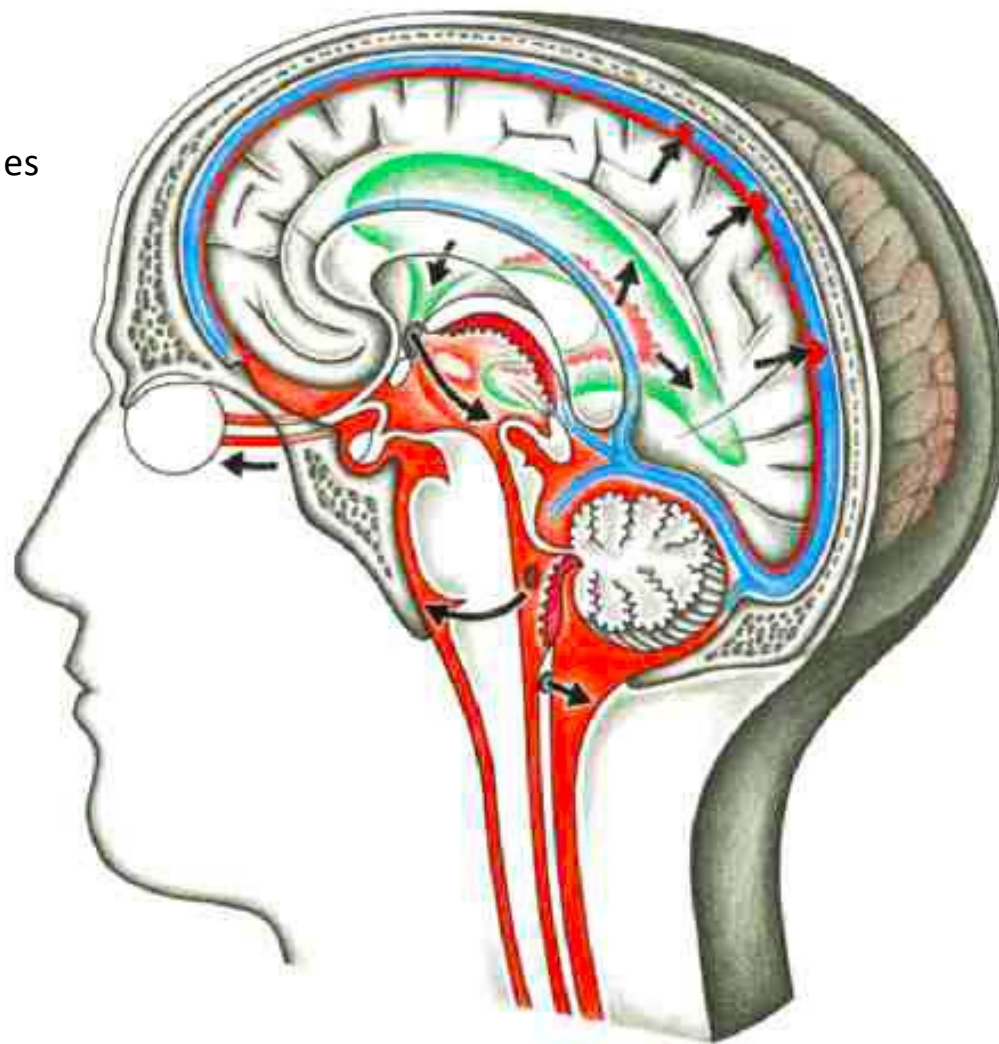
postérieur



# Circulation du liquide céphalo-rachidien.

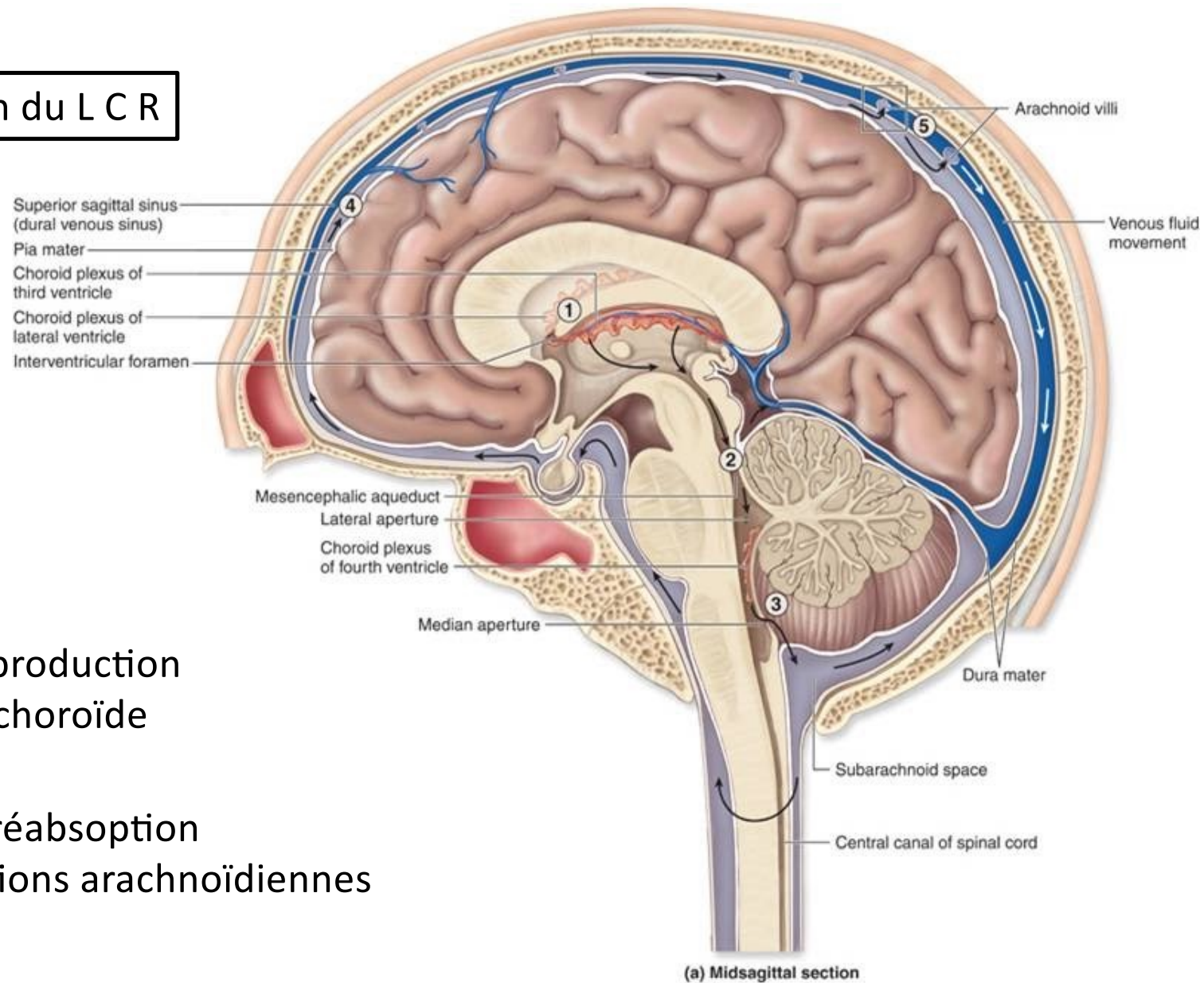
Formation du LCR : plexus choroïdes

Le nerf optique est entouré de LCR.

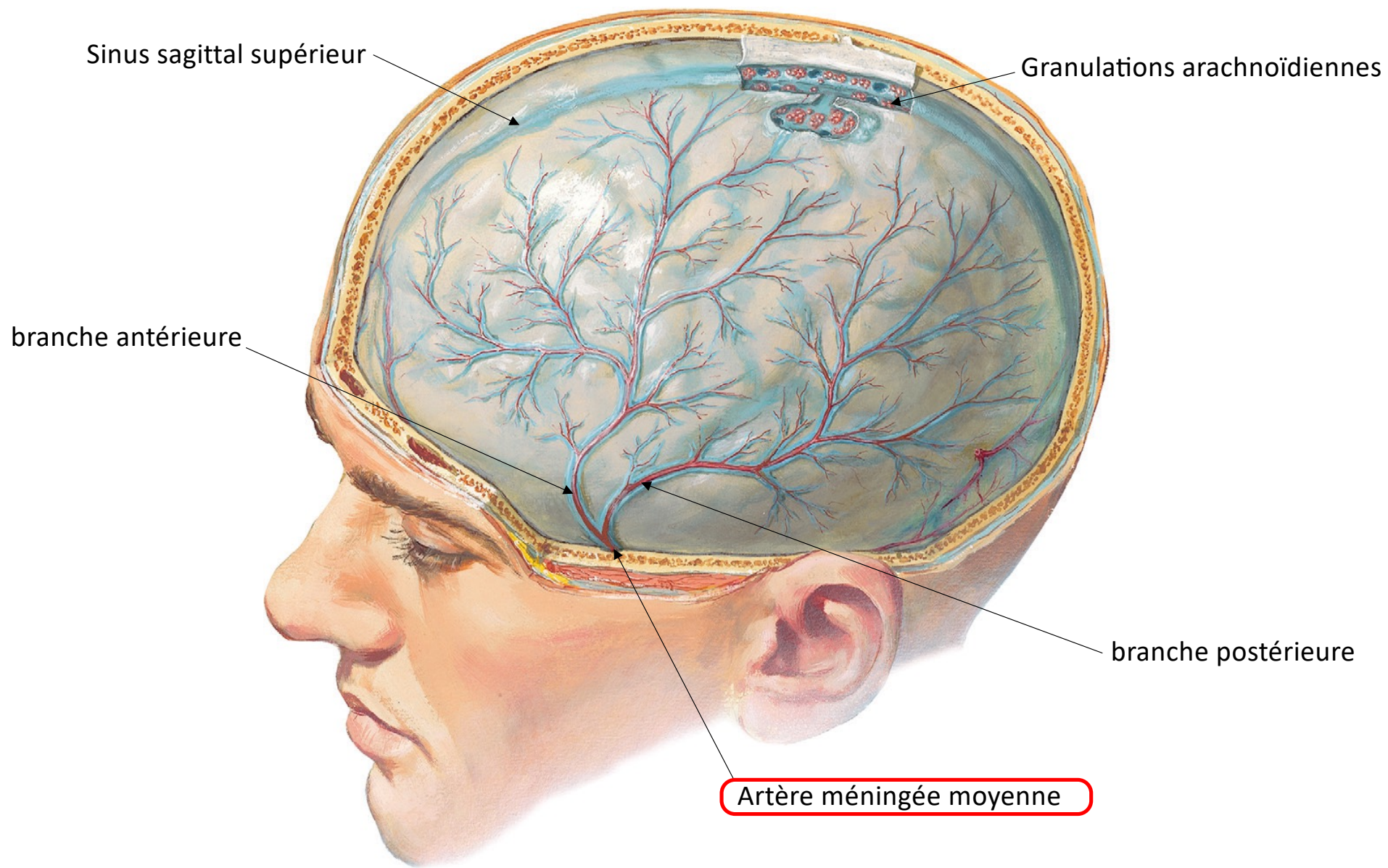


Granulations arachnoïdiennes  
(retour dans le sang veineux)

## Circulation du L C R

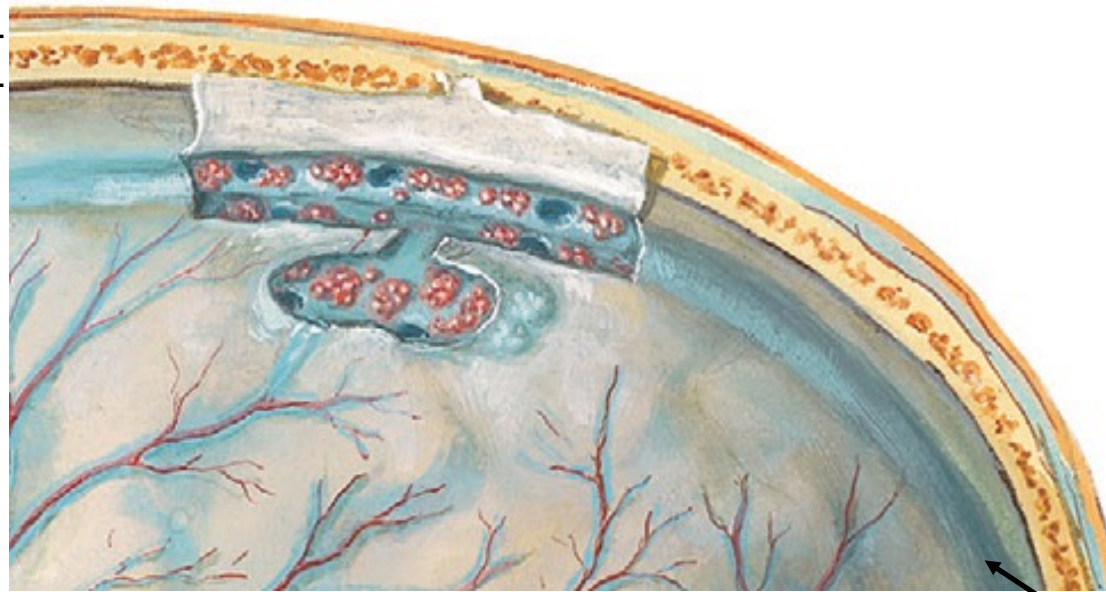


- sites de production  
plexus choroïde
- sites de réabsorption  
granulations arachnoïdiennes



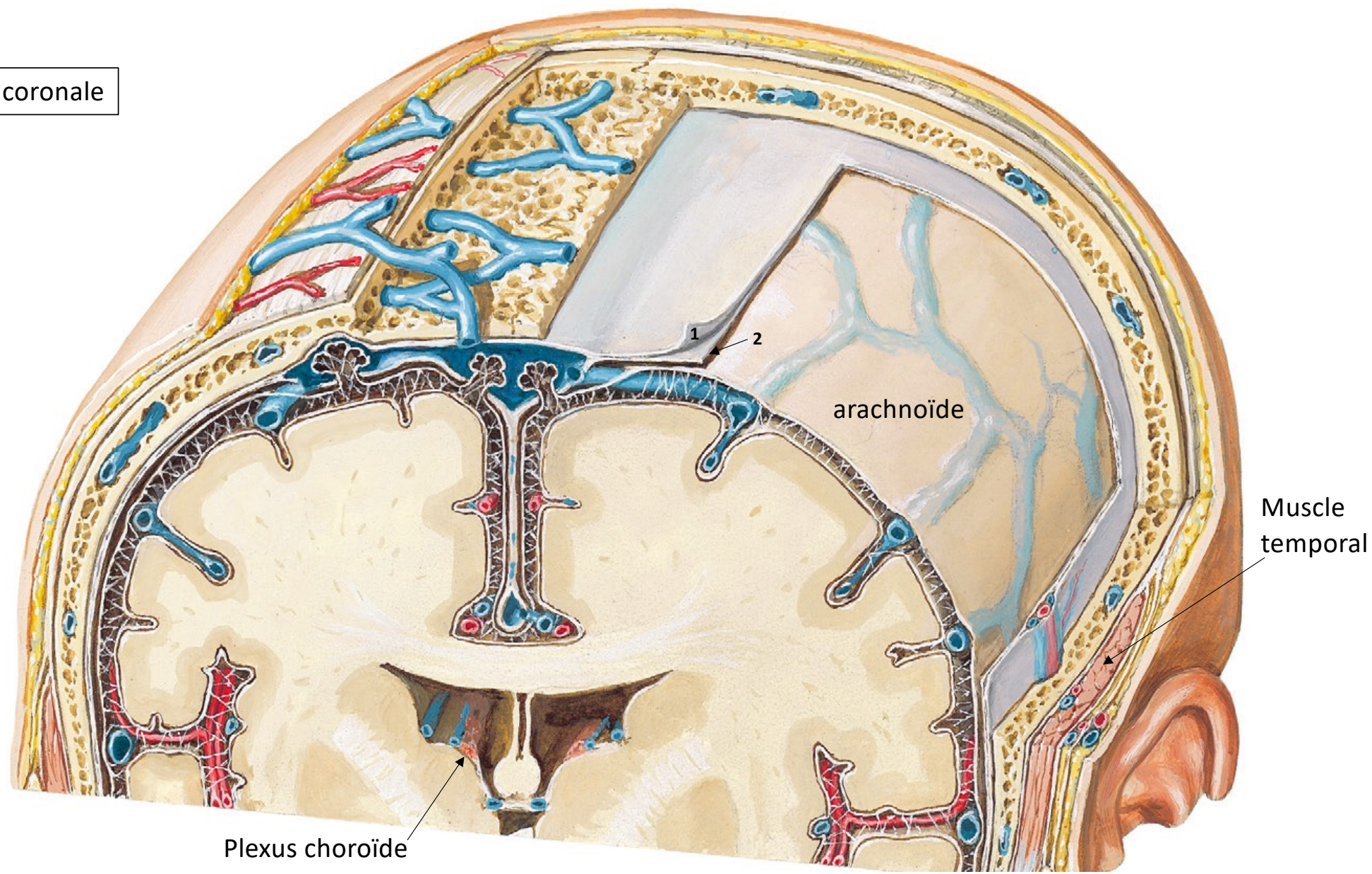
Le L C R retourne dans le système veineux

os plat



Sinus sagittal supérieur

Coupe coronale

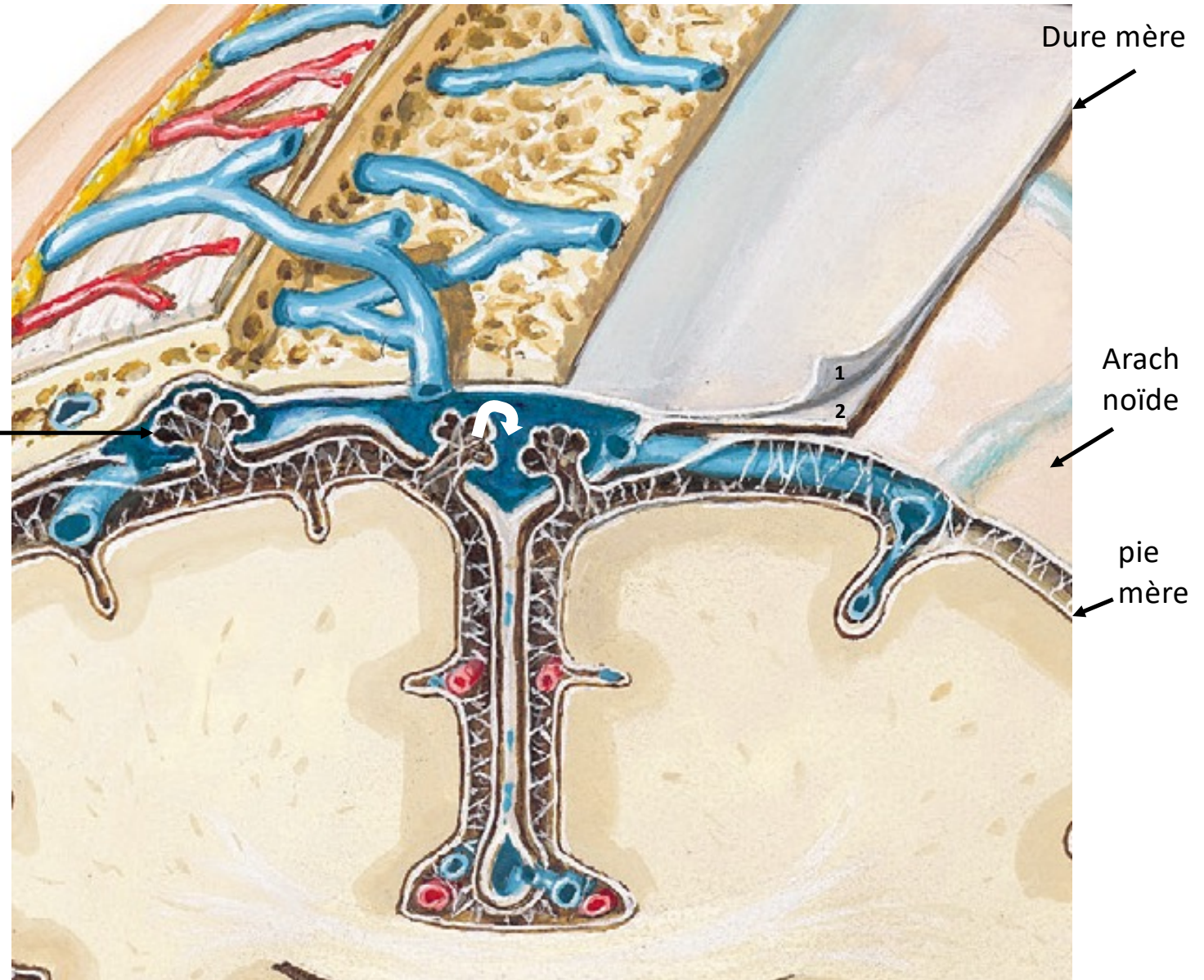


arachnoïde

Muscle temporal

Plexus choroïde

Granulation arachnoïdienne  
(de Pacchioni)

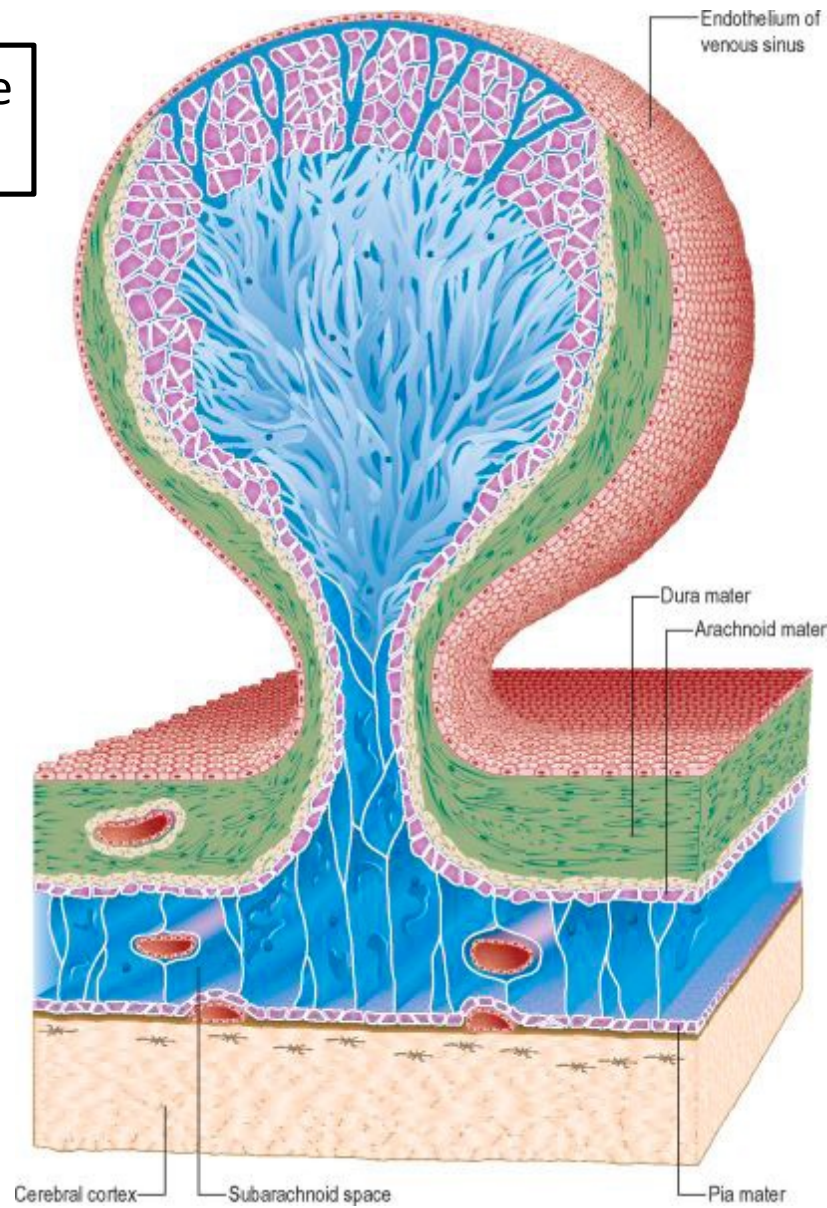


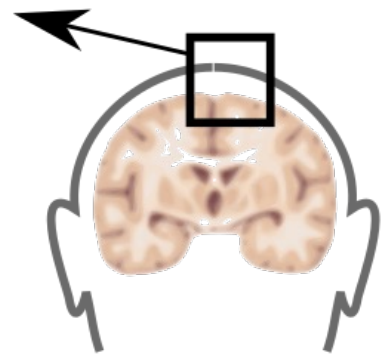
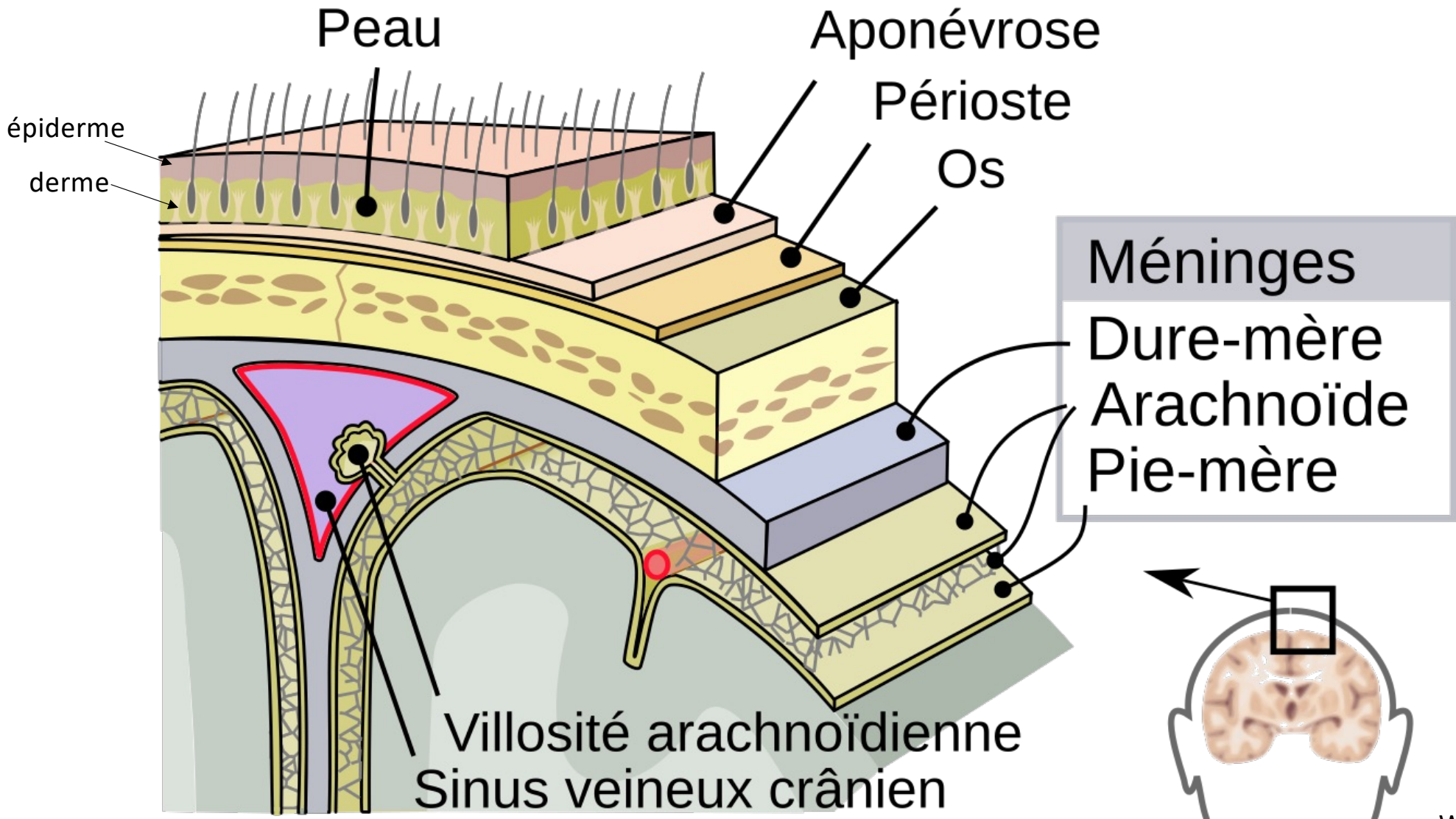
Granulation arachnoïdienne  
(de Pacchioni)

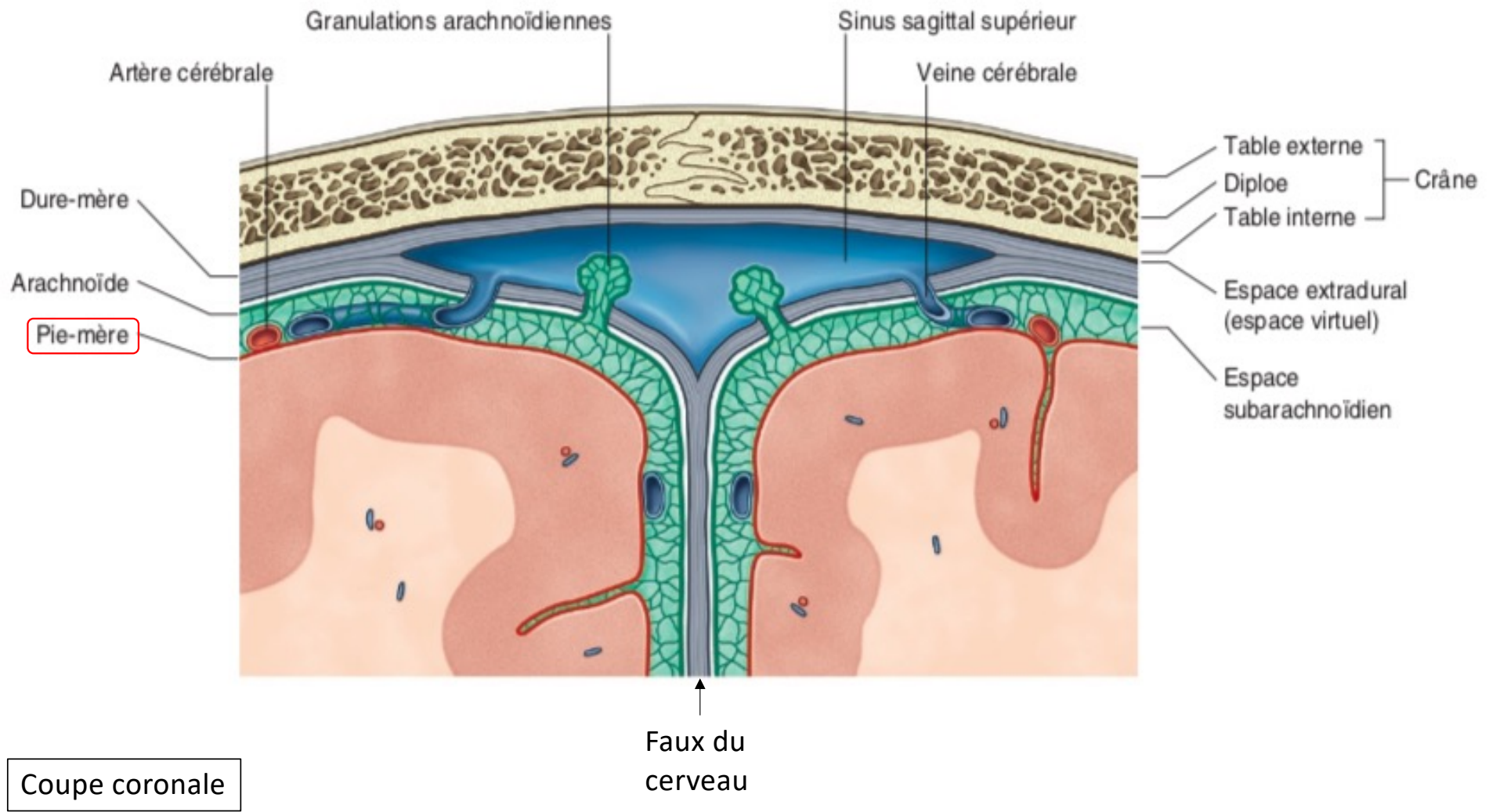
Endothélium  
d'un sinus veineux

Dure-mère

LCR



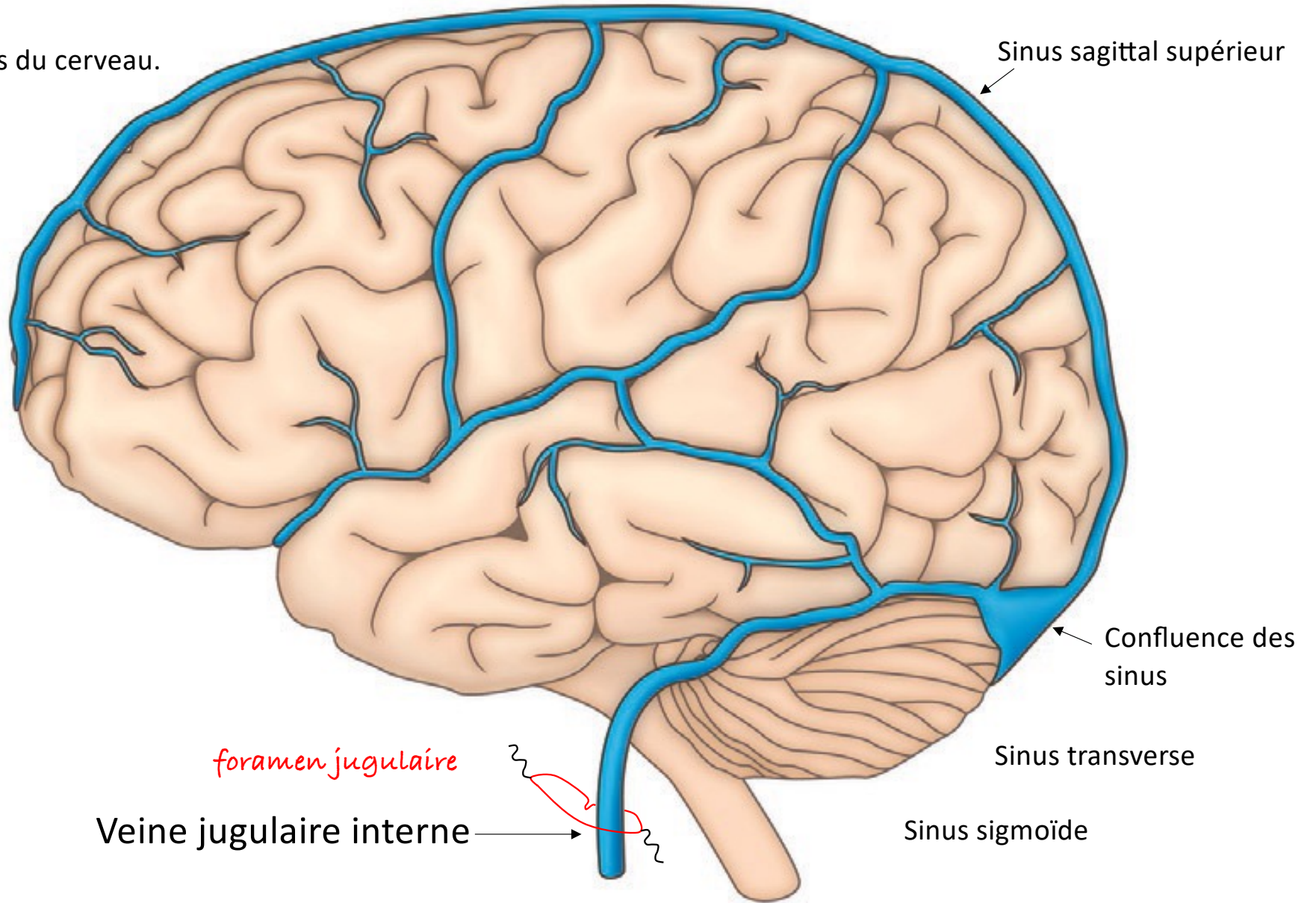


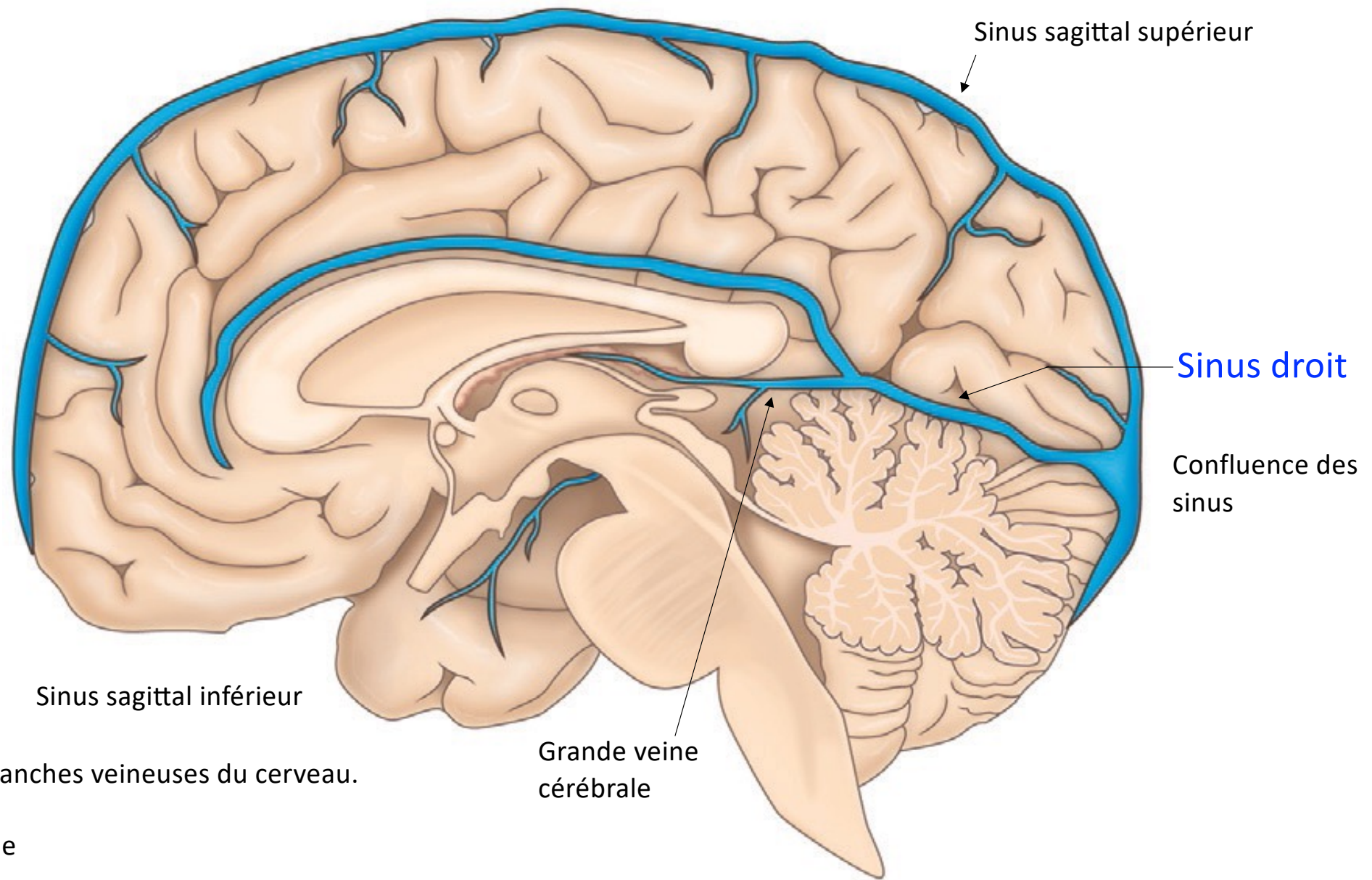


**Figure 9.25**

Branches veineuses du cerveau.

**A.** Vue latérale.





**Figure 9.25** Branches veineuses du cerveau.

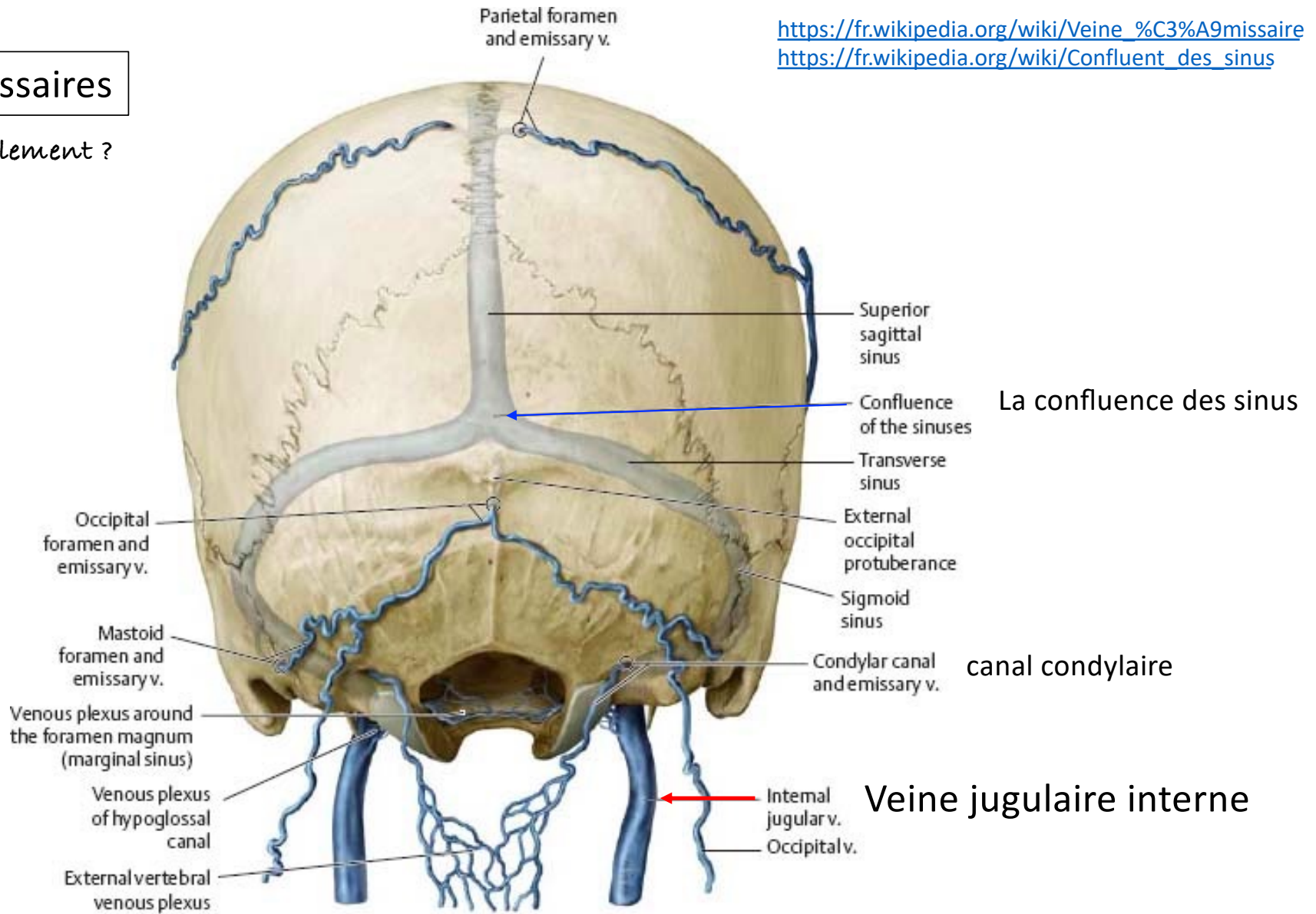
**B.** Vue sagittale

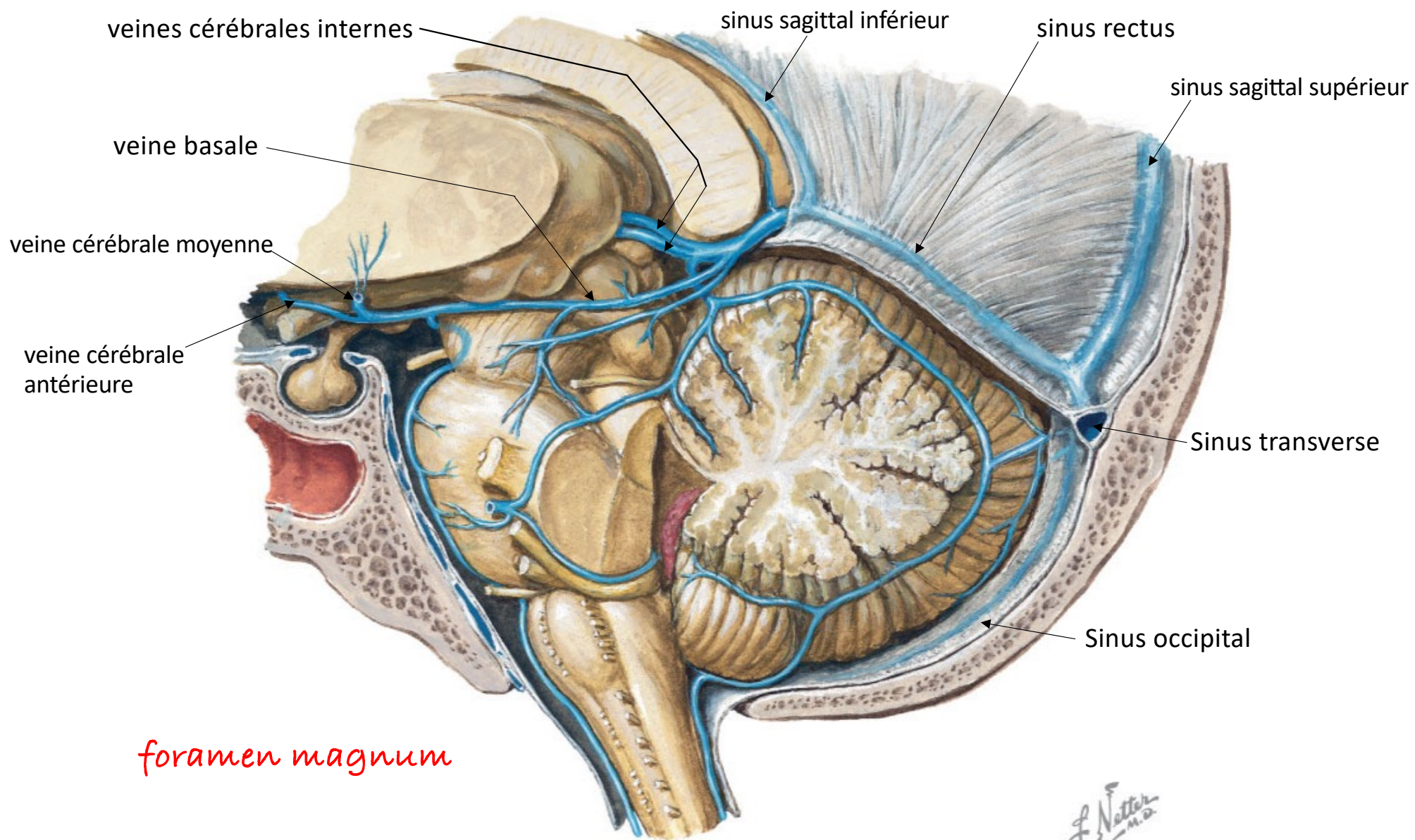
# Veines émissaires

*sens de l'écoulement ?*

Thermorégulation:  
le sang entre dans la  
boîte crânienne

[https://fr.wikipedia.org/wiki/Veine\\_%C3%A9missaire](https://fr.wikipedia.org/wiki/Veine_%C3%A9missaire)  
[https://fr.wikipedia.org/wiki/Confluent\\_des\\_sinus](https://fr.wikipedia.org/wiki/Confluent_des_sinus)

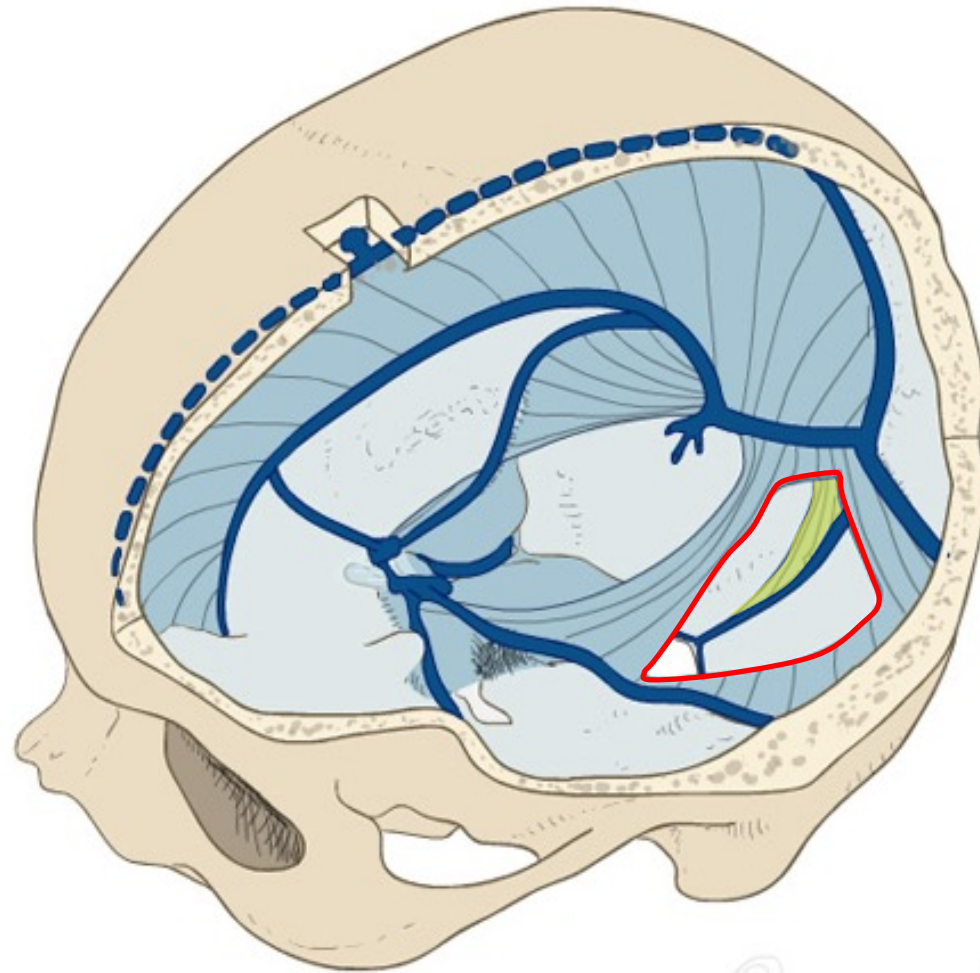




Coupe coronale



Vue antérieure



La faux du cervelet  
sinus occipital

Figure 9.18  
Sinus veineux dans la dure-mère.

